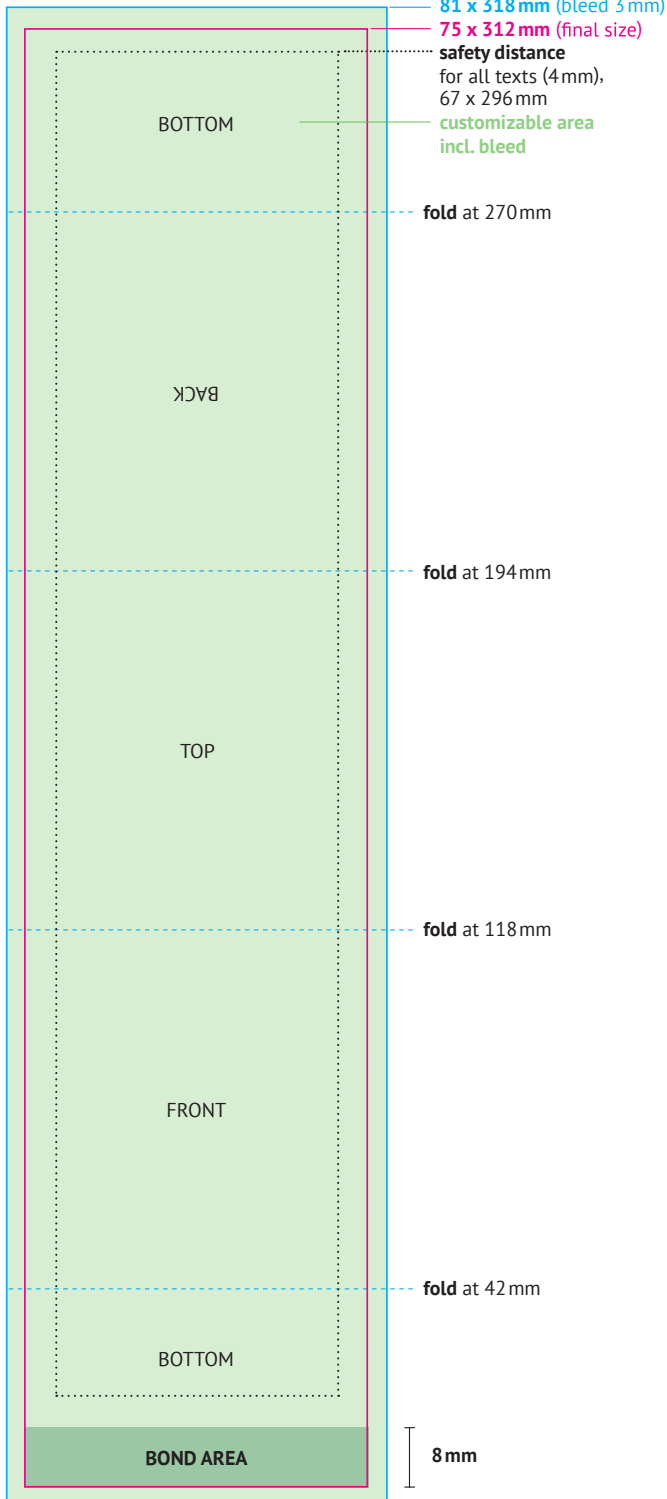
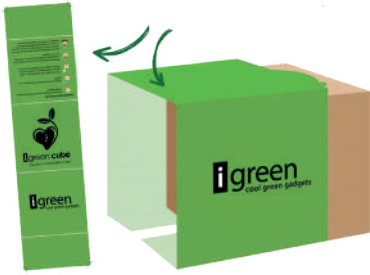
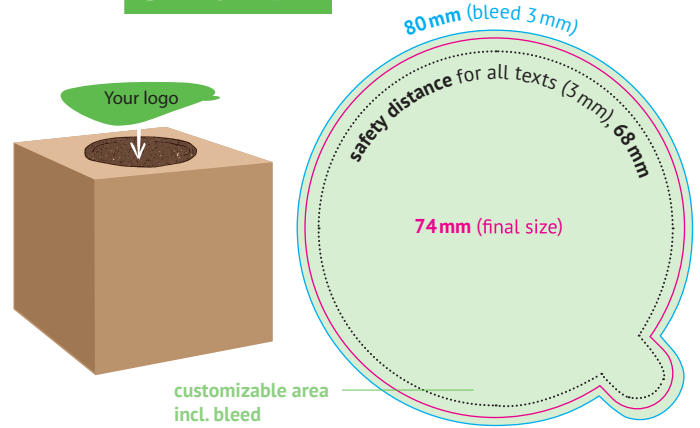


## SLEEVE



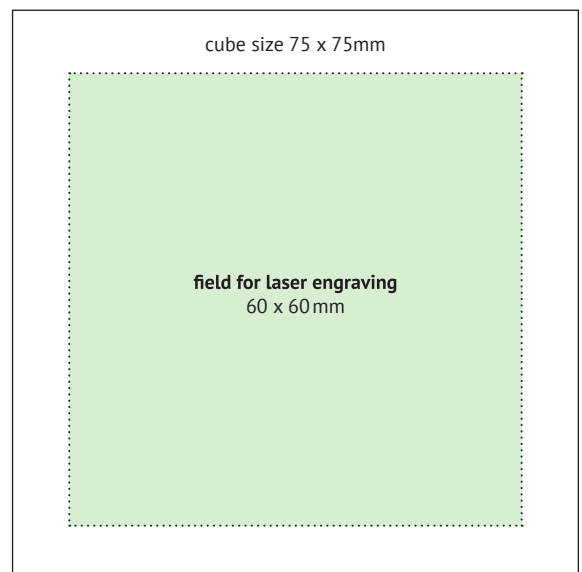
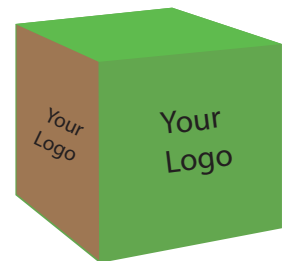
**create printing files in original size:** scale 1 :1  
**bleed:** 3 mm  
**safety distance:** 4 mm for all fonts  
**color code:** CMYK | **resolution:** 300 dpi  
**fonts:** convert into paths  
**printing files:** solely as PDF (hide template, **no crop marks**), format 81 x 318mm

## STICKER

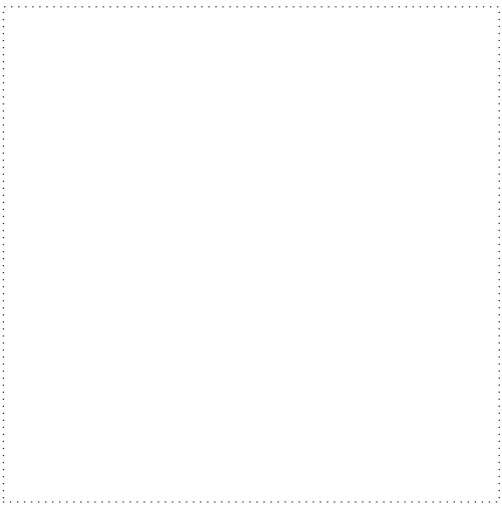
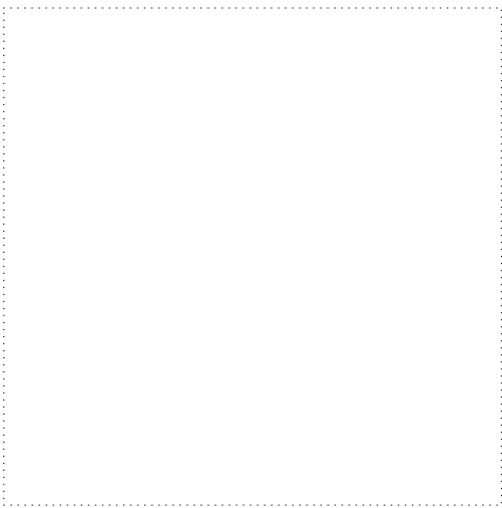
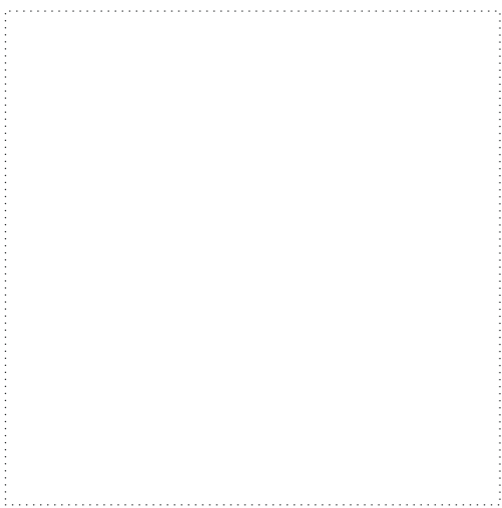


**create printing files in original size:** scale 1 :1  
**bleed:** 3 mm  
**safety distance:** 3 mm for all fonts  
**color code:** CMYK | **resolution:** 300 dpi  
**fonts:** convert into paths  
**printing files:** solely as PDF (hide template), format 80 x 80 mm

## LASER ENGRAVING



**create printing files in original size:** scale 1 :1  
**bleed:** no bleed is required  
**color code:** RGB black/white or RGB grayscale  
**resolution:** vector graphics  
**fonts:** convert into paths  
**printing files:** solely as **vector graphics** (PDF/eps./ai./cdr), format 75 x 75mm



**BOND AREA**

LASER  
ENGRAVING

Your  
logo

Field for laser engraving  
60x60 mm



STICKER

Your  
logo

Safety distance for all texts (3mm), 71mm

**74 mm (Final size)**